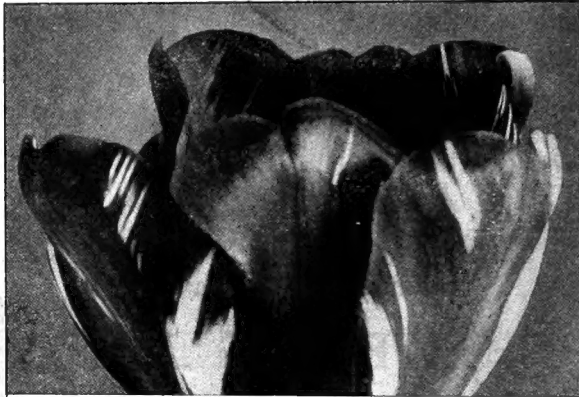


OFFICE COPY

WALTER S. SCHELL'S
QUALITY BULBS

They Grow Better

They Bloom Better



Hyacinths

Tulips

Narcissi

Lilies

Cyclamen

Crocus

Gift of

J. Horace McFarland Co.

Harrisburg, Penna.

May 1957

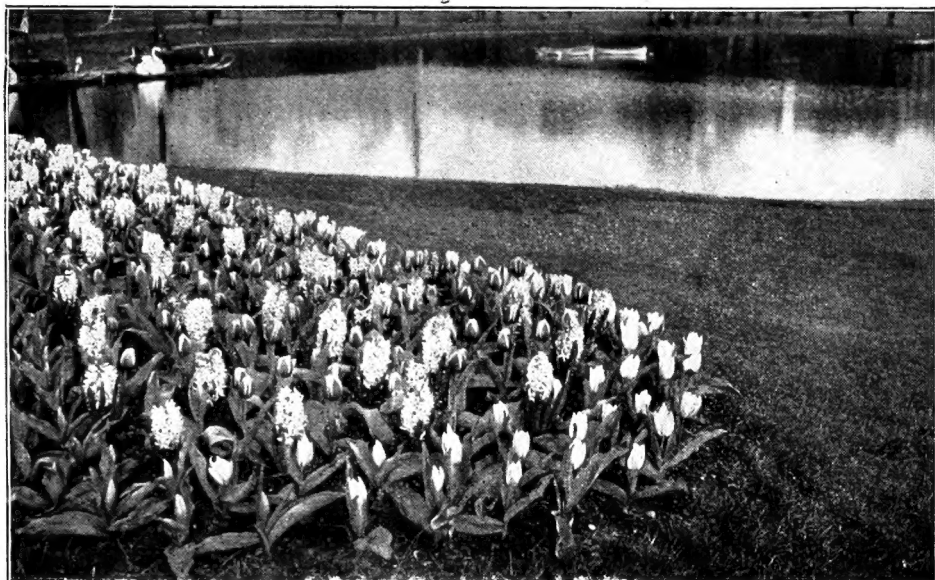
My High-Quality Bulbs Produce the Very Finest Flowers



WALTER S. SCHELL

Quality Bulbs and Seeds

1307-1309 Market Street - - HARRISBURG, PA.



A Bed of Hyacinths and Tulips

FLOWERING BULBS

For Growing Indoors in Pots and Boxes and Outside in Beds and Borders and Window-Boxes

The following cultural directions will apply to any of the Bulbs—However, some varieties such as Freesias, Paper-White Narcissi, Harrisii Lilies, etc., are not hardy and can not be grown outdoors. I have marked all that may be planted outdoors under the various headings as hardy.

Pot Culture in the House. Plant from September to December in rich, sandy loam, in pots, inserting the bulb so that its top will be just below the surface. Do not pack the soil in the pots, as the bulbs will be much less likely to push out when the root growth commences if the soil is loose. A splendid mass effect may be had by planting a considerable number of bulbs in a flat or window-box. Water thoroughly and set the pots or boxes away in a cool, dark place for several weeks. If cold coffee is used occasionally instead of water, it will often increase in intensity the coloring of the flowers. Keeping in the dark will allow the roots to grow and become firmly fixed in the soil, when the plants can be brought into the light and will at once commence the top growth. By bringing the pots into the light at different times, something of a succession of bloom may be had. During their growth they should be kept near the light and at a temperature of 50 to 70 degrees and watered frequently. A good fertilizer may be used.

Outdoor Culture in Beds or Borders. The bulbs may be planted almost any time from October until the ground is frozen solid, but it is advisable to purchase early, before my stocks are depleted. They succeed in any good, well-drained garden soil, which should be well spaded, and will be better if some well-rotted manure is mixed through it. Set the bulbs so that the tops will be between three and four times their own thickness below the surface. Pack a little sand under and about them if it is convenient, being careful that none of the manure comes in direct contact with the bulbs.

Before very severe weather comes on it is advisable to cover the beds with straw, leaves or manure, to protect them from severe cold during winter, but care should be taken that this covering is not too thick and dense, as the bulbs are as likely to be injured by being kept warm. Remove covering when severe freezing is over.

There is a Great Difference in the blooming qualities of Bulbs. My stock comes direct from one of the oldest Bulb Growers in Holland whose reputation for high quality Bulbs that produce the largest and best flowers is well known.

Note my prices for these Best Quality Bulbs are no more, and in some instances less, than is asked for ordinary Bulbs. If you contemplate planting a quantity submit your list for special quotations.

HYACINTHS, First-Size Bulbs

SINGLE BLUE

	Doz.	100
Czar Peter. Light lavender-blue; an old favorite.....	\$0 75	\$5 25
Enchantress. Most delicate porcelain-blue; splendid compact truss; one of the most beautiful of the light blues.....	75	5 25
Grand Maitre. Deep sky-blue; very large, compact spike.....	75	5 25
King of the Blues. Rich dark blue; splendid, well-finished truss; late....	75	5 25
Lord Derby. Large; compact spike of small, bright porcelain-blue bells.	75	5 25
Queen of the Blues. Light porcelain-blue; one of the best potting varieties.	75	5 25

SINGLE PINK

Charles Dickens. Most beautiful of the delicate pink varieties; very early	75	5 25
Gertrude. Splendid dark pink; large compact spike.....	75	5 25
Koh-i-noor. Bright pink, one of the largest semi-double flowers.....	75	5 25
Lady Derby. Delicate pink; splendid early forcing variety.....	75	5 25
Moreno. Big, lively pink bells; very heavy, compact truss; early forcer. ...	75	5 25
Sophie Campbell. Pink; large, compact truss; splendid pot	Doz.	100
Hyacinth.....	\$0 75	\$5 25

SINGLE RED

Robert Steiger. Deep red; splendid bedder.....	75	5 25
Roi des Belges. Bright scarlet; good forcer.....	75	5 25

SINGLE VIOLET

Lord Balfour. The best and earliest of the violet-colored sorts; extra large truss....	75	5 25
---	----	------

SINGLE WHITE

Baroness van Thuyll. Pure white; large, fine compact spike.....	75	5 25
La Grandesse. Large; pure white bells, forming perfect truss.....	75	5 25
L'Innocence. Large; white, compact truss; especially fine for potting.....	75	5 25

SINGLE YELLOW

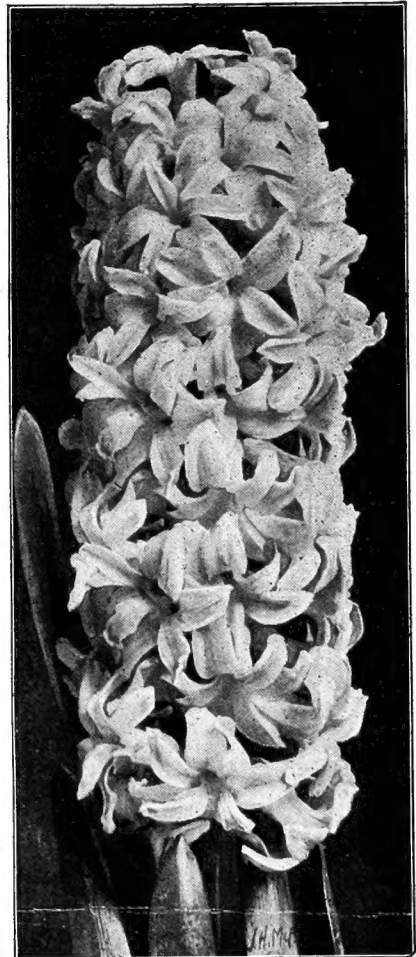
King of the Yellows. Pure yellow; the best of its color..	75	5 25
--	----	------

Second-Size Bulbs

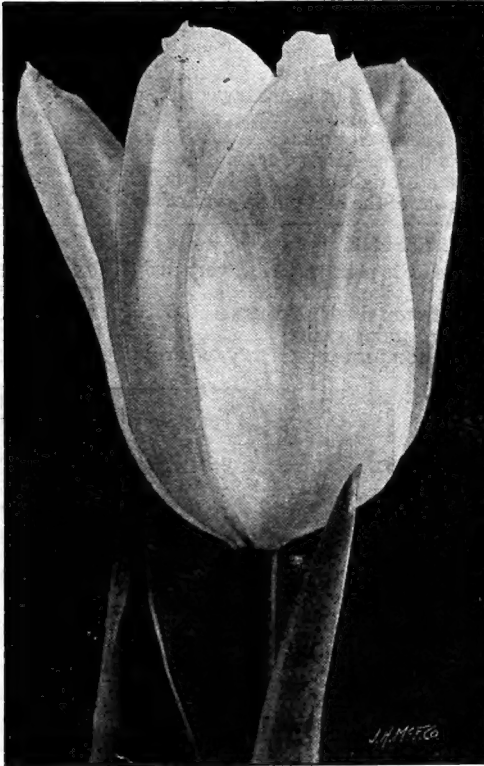
NOTE. Second size (not second quality) seem to satisfy better the wants of the average buyer than the much higher priced first-size Hyacinths. The sending out of too young bulbs is the cause of many complaints. We guarantee our seconds to be of sufficient age to give entire satisfaction.

SINGLE PINK

	Doz.	100
Charles Dickens	\$0 60	\$3 75
Gertrude	60	3 75
Moreno	60	3 75



Single Hyacinth



Joost van Vondel Tulip

SINGLE RED HYACINTHS

	Doz.	100
Robert Steiger.....	\$0 60	\$3 75
Roi des Belges.....	60	3 75

SINGLE WHITE

	Doz.	100
La Grandesse.....	\$0 60	\$3 75
L'Innocence.....	60	3 75

SINGLE BLUE

	Doz.	100
Grand Maitre.....	\$0 60	\$3 75
King of the Blues ...	60	3 75
Queen of the Blues..	60	3 75

SINGLE YELLOW

	Doz.	100
Ida. Extra fine.....	\$0 60	\$3 75
King of the Yellows..	60	3 75

SINGLE VIOLET

	Doz.	100
Lord Balfour.....	\$0 60	\$3 75

Second-Size Unnamed

FOR FORCING OR BEDDING

	Doz.	100
Single Dark Red ...	\$0 40	\$3 00
“ Rose	40	3 00
“ Pure White...	40	3 00
“ Dark Blue....	40	3 00
“ Light Blue....	40	3 00

White Roman Hyacinths

40 cts. per doz., \$3 per 100

TULIPS

SINGLE EARLY TULIPS

	Doz.	100
Artus. Brilliant scarlet; dwarf; a splendid bedder.....	\$0 20	\$1 25
Belle Alliance. Large, scarlet flower; excellent for forcing and bedding ..	35	2 00
Chrysolora. Pure golden yellow; a good bedder.....	15	85
Cottage Maid. Bright pink; splendid for late forcing and for bedding...	15	1 10
Couleur Cardinal. Extra brilliant crimson; unrivaled for late forcing and for bedding.....	25	1 50
Crimson Brilliant. Scarlet; an early forcer of great merit.....	20	1 25
Golden Queen. Golden yellow; very early forcer; flowers of enormous size on strong stems.....	60	4 00
Hobbema. A unique and undescrivable color, best described by “crushed strawberry”; a very handsome flower.....	60	4 00
Joost van Vondel. Pure white; the largest and best in its color.....	35	2 50
Keizerkroon. Red with broad yellow border; fine for forcing or bedding ..	25	1 40
La Reine (Queen Victoria). White, slightly shaded pink.....	15	90
Nelley. Very large; pure white; splendid bedder.....	20	1 25
Ophir d'Or. Pure yellow, undoubtedly the best yellow for bedding.....	25	1 50
Pink Beauty. Rosy pink, slightly shaded white; a grand flower as yet unsurpassed in size and beauty.....	60	4 00
Rose Grisdelin. White, shaded delicate pink; splendid for pots.....	25	1 25
Rose Luisante. Beautiful white and rose; of unsurpassed qualities for forcing and bedding. Does extraordinarily well in pots and pans.....	30	2 25
White Hawk. One of the best white Tulips.....	35	2 50
Yellow Prince. Golden yellow; sweet scented; the leading yellow Tulip...	15	1 00
QUALITY MIXTURE OF ALL COLORS. Containing all shades.....	15	85

Double Early Tulips

	Doz.	100
Blanche Hative. Pure white; one of the earliest.....	\$0 30	\$1 75
Couronne d'Or. Golden yellow, with orange; a splendid long-stemmed and large-flowering variety for forcing in pots or pans.....	30	2 00
Imperator Rubrorum. Glowing scarlet; splendid forcing variety.....	40	2 25
La Candeur. Pure white; very fine bedder.....	20	1 40
Murillo. Beautiful light pink; good forcer or bedder.....	30	1 75
Titian. Red, bordered yellow; good forcer.....	25	1 75
Tournesol. Red and yellow; very early.....	30	1 75
Vuurbaak. An enormous flower of rich brilliant scarlet; fine forcer.....	50	3 00
QUALITY MIXTURE. All shades and colors.....	15	90

Cottage Tulips (Late- or May-Flowering Tulips)

These grand late-flowering garden Tulips are on the rising tide of popularity. They do not supplant early Tulips for forcing, nor bedding, but for mixed gardens, herbaceous borders, sunny positions in proximity to shrubbery, etc., where these late Tulips need not be disturbed, they will prove a source of great satisfaction, being very hardy, and continue to grow, increase and flower for many years, conditions being at all congenial. During May they present a gorgeous appearance, the flowers being very large, of durable substance, beautifully formed and borne on tall stiff stems, rendering them of exceptional value when cut for vases.

	Doz.	100
Caledonia. Very dark orange-red, on dark stem; medium height; one of the most beautiful and effective bedders.....	\$0 40	\$2 50
Elegans alba (White Crown). Large; white recurved petals, margined rosy red; a very attractive flower.....	50	3 00
Gesneriana lutea. Immense golden yellow; one of the best.....	30	1 75
Gesneriana spathulata. Brilliant scarlet, blue center; one of the best.....	20	1 25
Golden Crown. Yellow, bordered and feathered bright red.....	20	1 00
Inglescombe, Pink. Salmon-rose; gigantic flower on a strong stem; fine.....	35	2 50
Isabella (Shandon Bells, or Blushing Bride). Carmine-rose, shaded creamy white; splendid forcer and bedder.....	25	1 35
Picotee (Maiden's Blush). White, margined rose.....	20	1 25
Retroflexa. Yellow; elegantly recurved petals; very handsome.....	25	1 35

Parrot Tulips

These belong to the late or May-flowering Tulips, and have immense, attractive flowers of singularly picturesque form and brilliant and varied colors. The petals are curiously fringed or cut, and the form of the flower, especially before it opens, resembles the neck of a parrot. In splendid mixture, 15 cts. per doz., 85 cts. per 100.



A Bed of Tulips

SINGLE HARDY NARCISSI

(Ajax, or Single Trumpet Daffodils)

	Doz.	100
Empress. Pure white perianth; deep yellow trumpet, 20 inches high. . . .	\$0 35	\$1 50
Victoria. Creamy white perianth; rich yellow trumpet; splendid forcer; very free bloomer; highly recommended.	40	2 00
Emperor. Large golden yellow trumpet; deep primrose perianth, 20 inches high (double nose bulbs).	35	1 75
Glory of Leiden. Full; yellow; one of the largest and most beautiful of all; broad feathery foliage; 14 inches high.	35	1 75
Trumpet Major. Pure yellow.	20	1 00

Narcissus Barri (Barr's Crown Daffodils)

Flora Wilson. Pure white perianth; cup yellow, edged orange-scarlet; one of the handsomest Narcissi; 20 inches high. (The Barri is the result of garden crosses between yellow Trumpet and Poeticus, the depth of the crown or cup is $\frac{1}{4}$ to $\frac{1}{3}$ the length of its perianth petal). 60 cts. per doz., \$4 per 100.

Single Hardy Narcissus Poeticus (The Dolly-Cup Daffodils)

The Poeticus have, instead of a trumpet or crown, a small wide-mouthed cup, the depth of which is less than $\frac{1}{4}$ the length of a perianth petal.

They are hardy as rocks, producing long-stemmed fragrant flowers that are prized for cutting. They thrive in gardens, and for naturalizing in grass or semi-wild places they are magnificent; by mixing the early and late-flowering sorts a continuous display of bloom may be enjoyed for weeks.

Almira. A superior form of Poeticus Ornatus; splendid forcer. 50c. per doz., \$3 per 100.

Ornatus. Perianth pure white; cup yellow, margined scarlet; one of the best. Double Nose Bulbs, 20c. per doz., \$1 per 100; First-size Bulbs, 15c. per doz., 75c. per 100.

PAPER-WHITE GRANDIFLORA (not hardy). 25 cts. per doz., \$1.30 per 100.

Double Hardy Narcissi

SPLENDID FOR POT AND GARDEN CULTURE

	Doz.	100
Incomparabilis (Butter and Eggs). Pure yellow; 17 inches high.	\$0 20	\$1 00
Orange Phoenix (Eggs and Bacon). Beautiful orange nectary and yellow.	20	1 00
Sulphur Phoenix (Codlins and Cream). Large; creamy white; flowers with sulphur nectary; 18 inches high.	30	1 50
Double van Sion. The true "Double Yellow Daffodil"; a great favorite for growing in pots and bedding. Double Nose Bulbs, 35 cts. per doz., \$2.50 per 100; First-size Bulbs, 30 cts. per doz., \$2 per 100.		



Narcissus Poeticus



A Planting of Crocuses

CHIONODOXA LUCILIAE (Glory-of-the-Snow)

These are among the most exquisite of spring-flowering bulbs, and should be grown in quantities. They produce flower-spikes bearing ten to fifteen lovely Scilla-like flowers. They are perfectly hardy, and may be planted as an edging to a bed, or in masses; naturalized in the lawn they are charming; they flower with the Snowdrops and last a long time in perfection. They will thrive well in any good garden soil, and are admirable for pot culture, for winter blooming in the house and for forcing, for cut-flowers. Bright blue, with large, clear white center. 15 cts. per doz., 80 cts. per 100.

CROCUS

NAMED CROCUS

	Doz.	100
Baron van Brunow. Blue.....	\$0 10	\$0 60
Maximilian. Purple; largest of all purples.....	10	60
Meyerbeer. Dark blue, edged white.....	10	60
Sir John Bright. Bright blue.....	10	60
Lothair. One of the best dark striped.....	10	60
Sir Walter Scott. Violet striped.....	10	60
King of the Whites. The best and largest white.....	10	60
Cloth of Gold. Yellow and brown.....	10	60
Cloth of Silver. White and blue stripes.....	10	60

Large Yellow Crocus

Mammoth Bulbs.....	20	1 25
First-size Bulbs.....	15	90
Second-size Bulbs.....	10	60

CYCLAMEN

Persicum giganteum. Pink, Red, White and Purple; separate.....	15	1 25
--	----	------

I have a very large assortment of bulbs, not included in this list

FREESIA

Freesias are most popular and charming bulbs for pot culture, flowering in the winter and spring in the conservatory, or window-garden; six or eight bulbs should be planted in a 4-inch pot. They force readily and can be had in bloom by Christmas if desired, and by having a dozen or more pots started they can be brought in at intervals, thereby keeping up a continuous display of bloom through the winter; the flowers are produced six to eight on stems about 9 inches high, and are particularly useful for cutting, remaining in good condition kept in water for two weeks. Pure white, with a yellow blotched throat; exquisitely fragrant. 25 cts. per doz., \$1.50 per 100.

FUNKIA

	Each	Doz.
Subcordata grandiflora (White Day Lily).....	\$0 15	\$1 25

GALANTHUS (Snowdrops)

	Doz.	100
Nivalis. Single Snowdrop.....	\$0 15	\$0 75
Nivalis, fl. pl. Double flowering.....	20	1 25

ORNITHOGALUM

Umbellatum (Star of Bethlehem).....	25	1 60
-------------------------------------	----	------

SCILLA

Sibirica. Sky-blue.....	15	80
-------------------------	----	----

SPIREA

Gladstone.	1 75	12 00
-----------------	------	-------

LILIUM CANDIDUM (Annunciation, St. Joseph's or Madonna Lily)

Pure white, fragrant flowers; borne in great profusion on long stems, 3 to 4 ft. high, flowering in June and July. Mammoth bulbs, 15 cts. each, \$1.50 per doz.

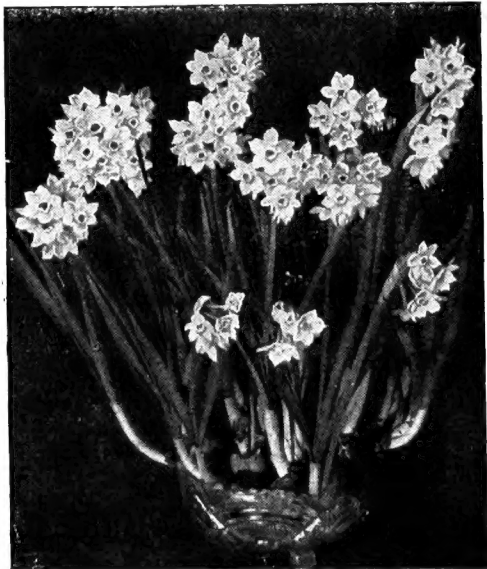
Lily-of-the-Valley

25 cts. per doz., \$1.35 per 100

CHINESE SACRED LILIES

The "Shui Sin Far" or Water Fairy Flower, Joss Flower or Flower of the Gods, etc., as it is called by the Celestials, is a variety of Narcissus, bearing in profusion chaste flowers of silvery white, with golden yellow cups. They are of exquisite beauty and entrancing perfume.

The bulbs, of large size and great vitality, are of luxuriant growth, producing several spikes of flowers; the incredibly short time required to bring bulbs into bloom (six to eight weeks after planting) is one of the wonders of nature. "You can almost see them grow," succeeding almost everywhere and with everybody. They do well in pots of earth, but are more novel and beautiful grown in shallow bowls of water, with enough fancy pebbles to prevent them from toppling over when in bloom. A dozen bulbs



Chinese Sacred Lilies

started at intervals will give a succession of flowers throughout the winter. Large true China-grown bulbs. 8 cts. each, 20 cts. for 3, 70 cts. per doz.

WALTER S. SCHELL Quality Seeds and Bulbs

1307-1309 Market Street

HARRISBURG, PA.